



---

**2022**

---

**ANNUAL REPORT**

---

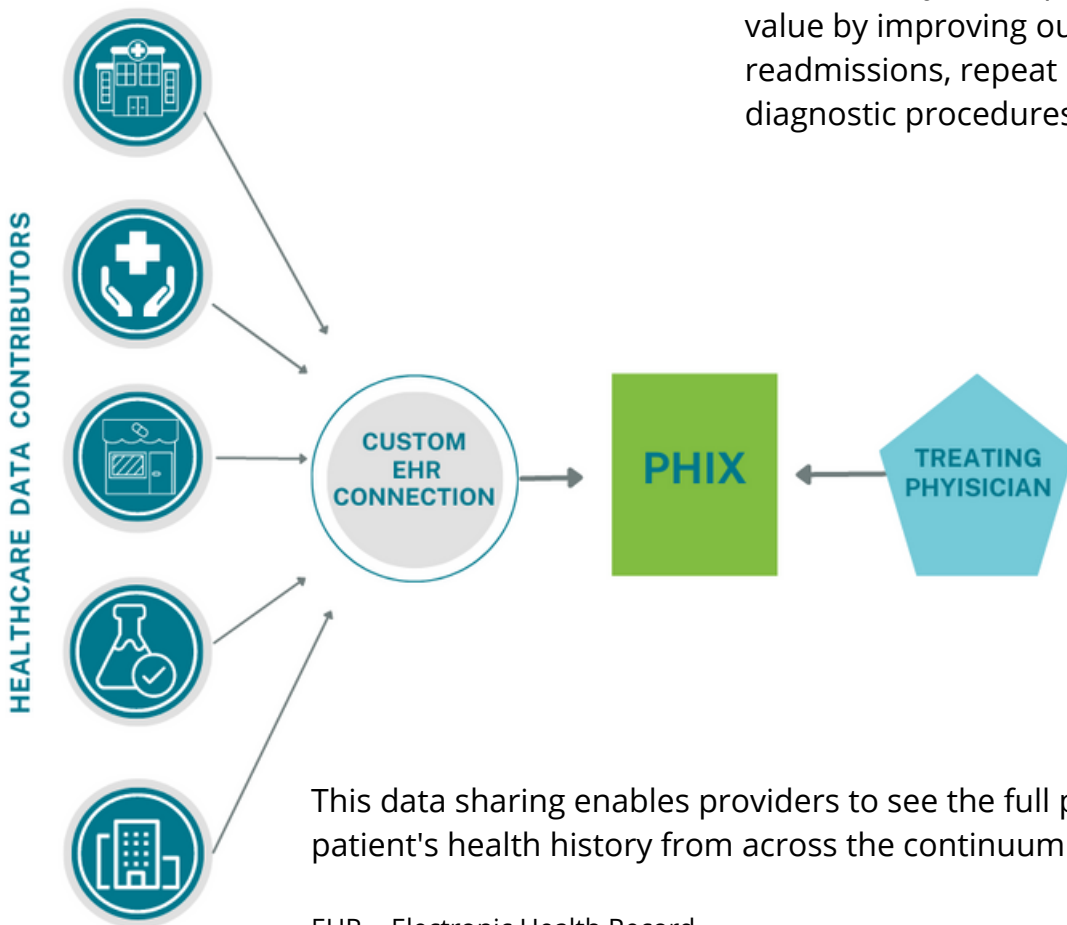
# Paso del Norte Health Information Exchange

PHIX is a 501(c)3 non-profit founded by El Paso health leaders in 2010 to improve health through collaboration and data technology. PHIX is based in El Paso, TX and serves providers and patients in west Texas and southern New Mexico. PHIX facilitates real time data sharing between hospitals, emergency departments, clinics, public health, laboratories, imaging centers, social service organizations and other health providers.

PHIX's core data sharing partners include University Medical Center of El Paso, El Paso Children's Hospital, Las Palmas Medical Center, Del Sol Medical Center, The Hospitals of Providence, Texas Tech University Health Sciences Center of El Paso, Emergency Health Network, and the City of El Paso Department of Public Health.

Through our clinical viewer, providers can review their patients records from across the PHIX network of partners. Having access to medical records securely and electronically at the point of care drives value by improving outcomes and reducing readmissions, repeat imaging, labs, and diagnostic procedures.

## PHIX Data Sharing Ecosystem



EHR = Electronic Health Record



# GOVERNANCE

## 2022 Board of Directors



**Sally Hurt-Deitch**  
**Board Chair**  
The Hospitals of Providence



**Jacob Cintron**  
**Board Secretary**  
Universal Medical  
Center of El Paso



**Rob Anderson**  
The Hospitals  
of Providence



**Kristen Daugherty**  
Emergence Health  
Network



**Juan Escobar, MD**  
El Paso County  
Medical Society



**Joel Hendryx, DO**  
El Paso County  
Medical Society



**Richard Lange, MD**  
Texas Tech University  
Health Sciences  
Center of El Paso



**Allie Lozano**  
The Hospitals of  
Providence



**Janel Lujan**  
El Paso Health



**Hector Oracanza, MD**  
The City of El Paso



**Tracy Yellen**  
Paso del Norte  
Health Foundation



# 2022 HIGHLIGHTS

## **PHIX Receives El Paso County Grant Funding to Develop Public Health Surveillance System**

PHIX was honored to be selected by El Paso County as one of the non-profits to receive American Rescue Plan Act (ARPA) funding. With this grant funding, PHIX began developing a public health surveillance system to support the community in the early detection and monitoring of health care trends in our region.



El Paso County Commissioner Illiana Holguin, PHIX Executive Director Emily Hartmann, and El Paso County Judge Ricardo A. Samaniego.

## **Value of PHIX's Community Partnerships Highlighted in National Journal**

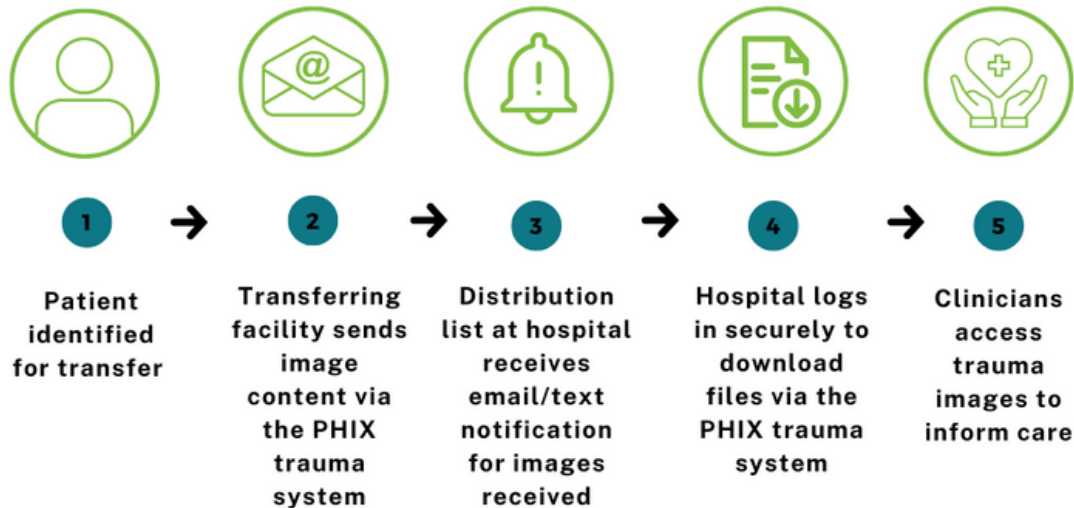
The *Journal of the American Medical Informatics Association* published an article on the value of PHIX's community partnerships. Dr. Chantel Sloan from Brigham Young University led the development of this article that highlights three examples of how PHIX and our partners have improved health care during the COVID19 and Afghan refugee responses. This article helped to exemplify the innovative and collaborative work happening within the region.



# 2022 HIGHLIGHTS

## Trauma Image Sharing

PHIX developed a secure system for pushing radiology images electronically. This system allows the receiving trauma team to gain immediate access to trauma images during a patient transfer, awarding them with lifesaving minutes.



## CDC Analysis on COVID19 Vaccine Effectiveness

PHIX participated in the Centers of Disease Control and Prevention (CDC) VISION Network to evaluate the effectiveness of COVID19 vaccinations and boosters. PHIX is proud to have provided de-identified data to ensure that our region is represented in these important discussions.

## National Conference: Better Together 2022

PHIX's Executive Director, Emily Hartmann, and Manager of Informatics & Operations, Juan Nanez, were speakers at the national Civitas Networks for Health 2022 Annual Conference in San Antonio, TX. Our team presented on how PHIX has engaged our partners to provide innovative solutions that supported our region during COVID19 and beyond.



# SPOTLIGHTS



## **Joel Hendryx, DO, highlights the timeliness of PHIX**

*"We are very proud and happy to be a part of this (PHIX). During the pandemic it was vital for us to be able to access the availability of whether a patient was positive or negative or what procedures were done."*

-Joel Hendryx, DO, El Paso County Medical Society President



## **Angie Widman, highlights PHIX's impact on transitions of care**

*"We had a patient who was a veteran in the hospital and in need of hospice services. He didn't have any family locally, so we used PHIX's clinical viewer to identify who the medical attorney was and admit the patient."*

-Angie Widman, Chief Administrative Officer, Tender Care Home Health and Hospice



## **Ed Michelson, M.D. highlights how PHIX improved patient outcomes**

*"Prior to PHIX if we needed records for a patient in another facility, we would need the patient to complete a form and deliver it. In the age of PHIX we can log-on the matter of seconds to find information we need avoiding the delay."*

-Dr. Ed Michelson, M.D, Texas Tech University Health Science Center of El Paso



## **Zenaida Trillo highlights the impact of PHIX notifications**

*"I like that we get notices when our patients are admitted to some hospitals, then that helps us track the patient so that we can follow up and make sure their overall health status stays better."*

-Zenaida Trillo, Compliance Specialist, Project Vida



# FINANCIALS

## Statement of Activities for the Year Ended December 31, 2022

### Assets

#### Current assets

Cash	\$	1,714,711
Receivable		62,440
Prepaid Expense		<u>112,368</u>

**Total Current Assets** 1,889,519

Fixed assets, net		8,134
Operating lease right of use assets		170,291
Licensed software		<u>440,000</u>

**Total Assets** \$ 2,507,944

### Liabilities and Net Assets

#### Current liabilities

Accounts payable	\$	95,258
Accrued payroll, vacation and taxes		101,497
Deferred revenue		36,740
Operating lease liability, current		57,122
Refundable advance		<u>127,875</u>

**Total Current Liabilities** 418,492

**Operating lease liability, long term** 125,472

#### Net Assets

Without donor restrictions 1,963,980

**Total Net Assets** 1,963,980

**Total Liabilities and Net Assets** \$ 2,507,944



# FINANCIALS

## Statement of Activities for the Year Ended December 31, 2022

### Without Donor Restrictions

#### Revenue, Support and Gains

Membership Dues	755,600
Subscription Service Revenue	87,645
Contract	814,324
Grants	151,842
Contributions	25,005
In-kind Contributions	148,000
Net Investment Income	2,104

**Total Revenue, Support and Gains** \$ 1,984,520

#### Expenses

Program Services	1,271,373
Management and General	220,270

**Total Expenses** 1,471,643

**Change in Net Assets** 512,877

**Net Assets, Beginning of Year** 1,384,078

**Prior period adjustment** 67,025

**Net Assets, Beginning of Year Restated** 1,451,103

**Net Assets, End of Year** 1,963,980

